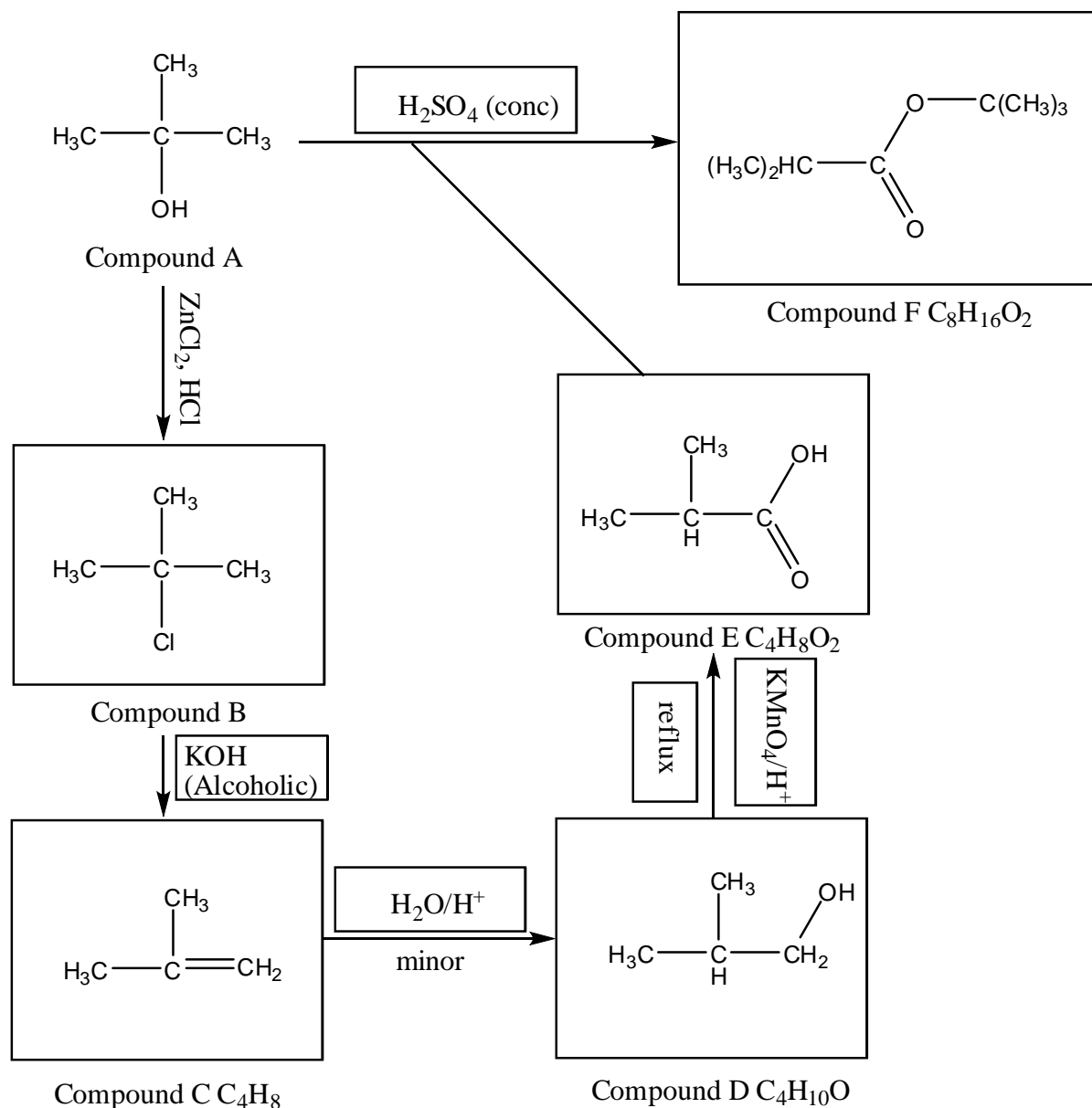
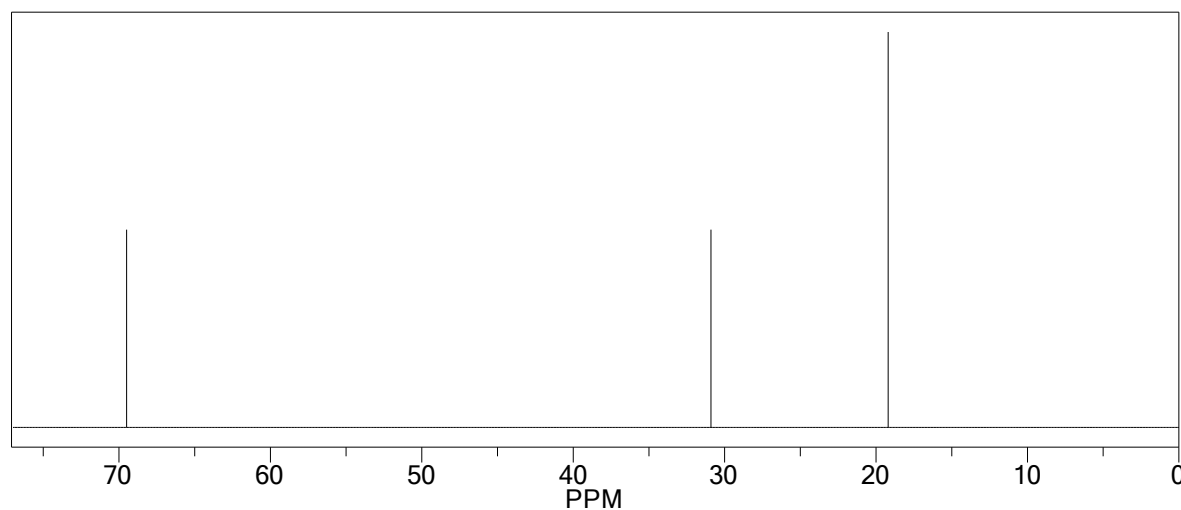
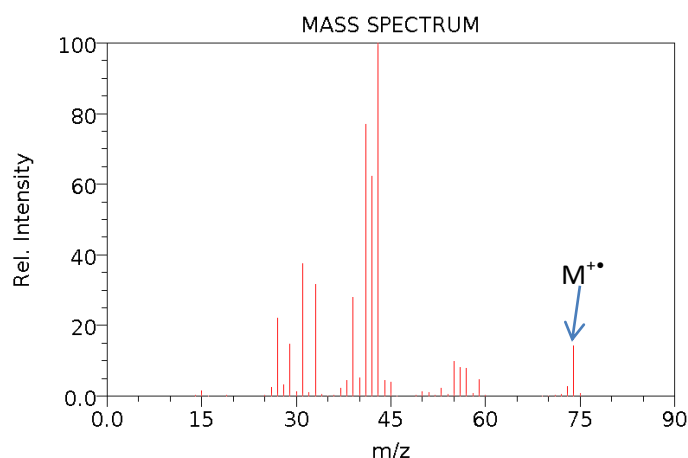
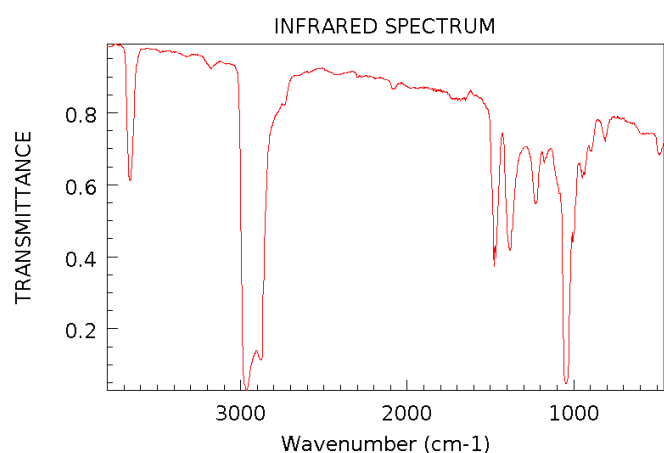


Question One- Complete the reaction scheme



Question Two

Identify which compound the spectrums below correspond to



The mass of the molecular ion shown in MS is 74 m/z

- Compound A** 74
- Compound B 92 (with 3 : 1 ratio peak @ 94)
- Compound C 56
- Compound D** 74
- Compound E 88
- Compound F 144

Since compound A only has 2 carbon environments while Compound D has 3 carbon environments, therefore the spectrums above belong to Compound D