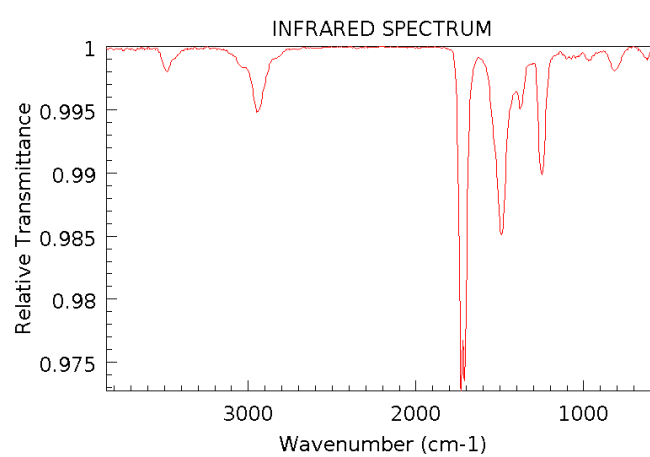
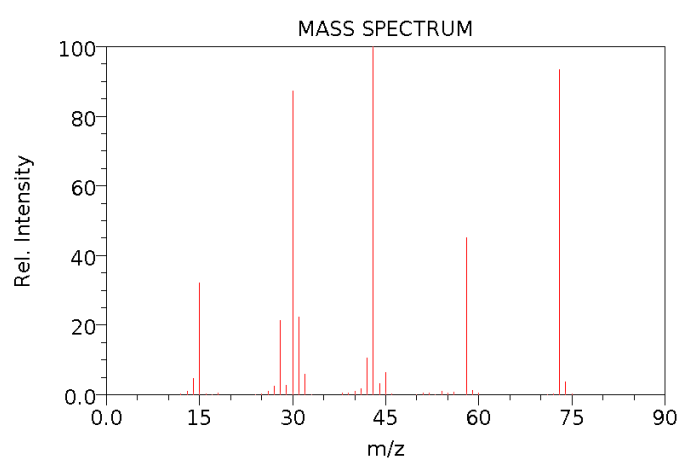
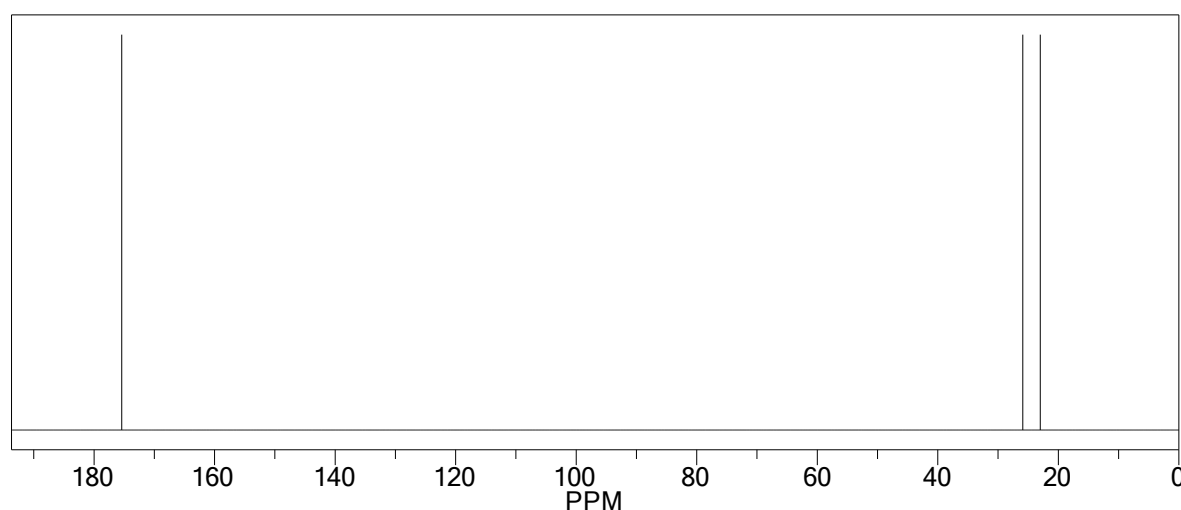


Below are the spectra-data for Compound E



- 1) Identify the molecular mass of Compound E (using the MS data)
- 2) Identify the possible functional group
 - a. Note: the peak on $\sim 1800\text{cm}^{-1}$ obscures the intensity of the spectrum
- 3) Identify the number of carbon environment
- 4) Draw all the structure(s)